

# Q-SPAN Summary

April 24, 2017

QTEC Solutions

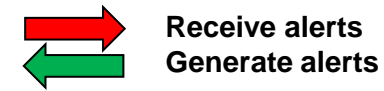
## What is Q-SPAN...?



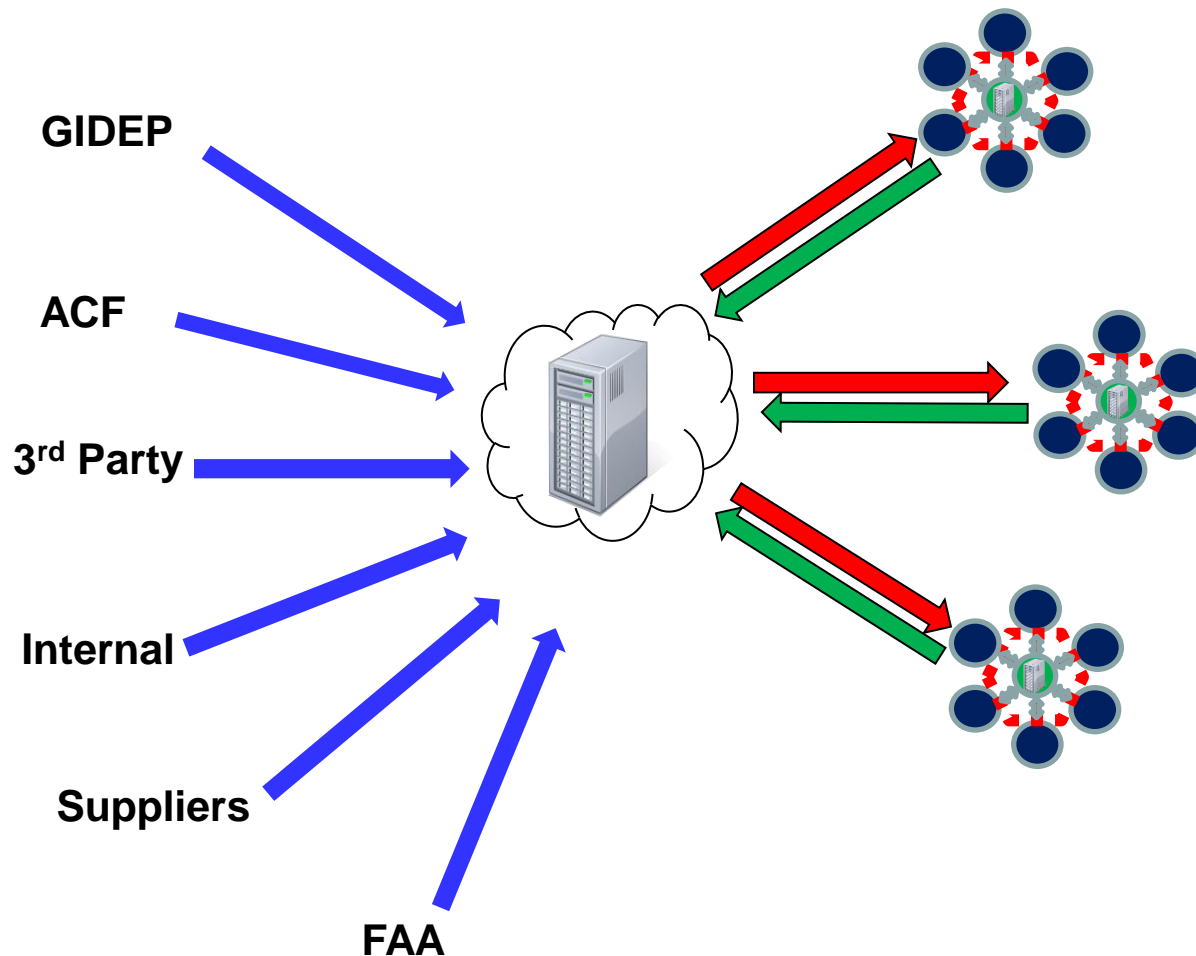
<input type="checkbox"/> Distinct Parts <input type="checkbox"/> Active Projects <input type="checkbox"/> Project Hierarchy in Project Health Status																		
Status   Q-SPAN Dashboard   Reports   Parts Lists   Project Manager   Master Parts   Part Lookup   Research Request   User Prefs																		
Project Name	Total	Part Counts		Part Availability						Parts with LTB	Parts at Risk	Env. Data	Q-Star™ Alerts	Q-SPAN Alerts	PCN Advisories	GIDEP Alerts	Health Value	
		Not Monitored	Unmatched Without Option	Unmatched With Option	User Resolved	Conditional Availability	Available	Discontinued Alts	No Alts									
Project COM Unit 2 (3-Level Indentured BOM)	23		2				1	5	8	7		16	21	10		5	19	46
Project Weapon System (49-Level Indentured BOM)	2,033	1,060	154	4			1	615	157	42		303	815	250	7	346	82	
QSPAN	628		113	399			2	13	34	67	2	104	116		850	539	26	
RAC COTS DEMO	1,278						4	720	159	395	3	573	1,278	31		170	62	
Samsung COTS	53		8	21			2	19		3		5	24	3	1	9	85	
test	12			5			2	2	3			5	7			3	70	
test2	12			12												1		
<b>Total</b>	<b>6,327</b>	<b>1,068</b>	<b>377</b>	<b>509</b>			<b>29</b>	<b>145</b>	<b>2,465</b>	<b>860</b>	<b>874</b>	<b>12</b>	<b>2,024</b>	<b>4,345</b>	<b>1,507</b>	<b>850</b>	<b>512</b>	<b>3,900</b>

- Web based test results database combined with DMSMS data
- Multiple Sources of Alerts: Distributors, Test Houses, GIDEP, ACF (Uk & Europe)
- Community Structures: Internal & External Alerts
- Automatic email alerts
- Automatic BOM Processing & Part Matching
- Standardized manufacturer part numbers
- Obsolescence & Test Data Side by Side

## Configurable Community Structures



- Configurable Communities
- By Invitation
- Anonymity or Not
- Configurable Nomenclature:  
Suspect, Nonconforming, Valid
- User Review of Evidence
- Part Number Level Reporting
- Email Alerts on YOUR parts
- Resolution Process

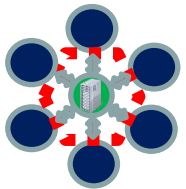




- **Integrated**
  - Obsolescence & test result in one place
  - Multiple databases
  - Internal system interface



- **Lower cost**



- **Community**
  - No mudslinging
  - Message board for sharing knowledge



- **Test Results Oriented**

- Positive & Negative



- **Incentivizes Participation:** Especially for contributors

## Q-SPAN Dashboard

This page shows Q-SPAN Alerts.

Total Alerts	Alerts Generated	Alerts Received	Internal Alerts	Global Alerts	External Alerts	Alerts Resolved	Alerts Flagged	Possible Matches
813		22			813		714	48

### Options

- Filter Unresolved Alerts
- Filter Flagged Alerts
- Group counts by Alert Type
- Group counts by Project

### Q-SPAN Communities Administration

- [▶ Add Alert](#)
- [▶ Import Data](#)
- [▶ Maintain Company Communities](#)
- [▶ Maintain Project Relationship within the Communities](#)

### Q-SPAN System Administration

- [▶ Custom Alert Setup](#)
- [▶ View Company Alerts Raised](#)

### External Alert Part Number Search

There are currently 4377 external alerts in the database.

## Q + Star™

Print

### External Alert Detail

**Part Number** PALCE22V10Z-15PI

**Manufacturer** AMD

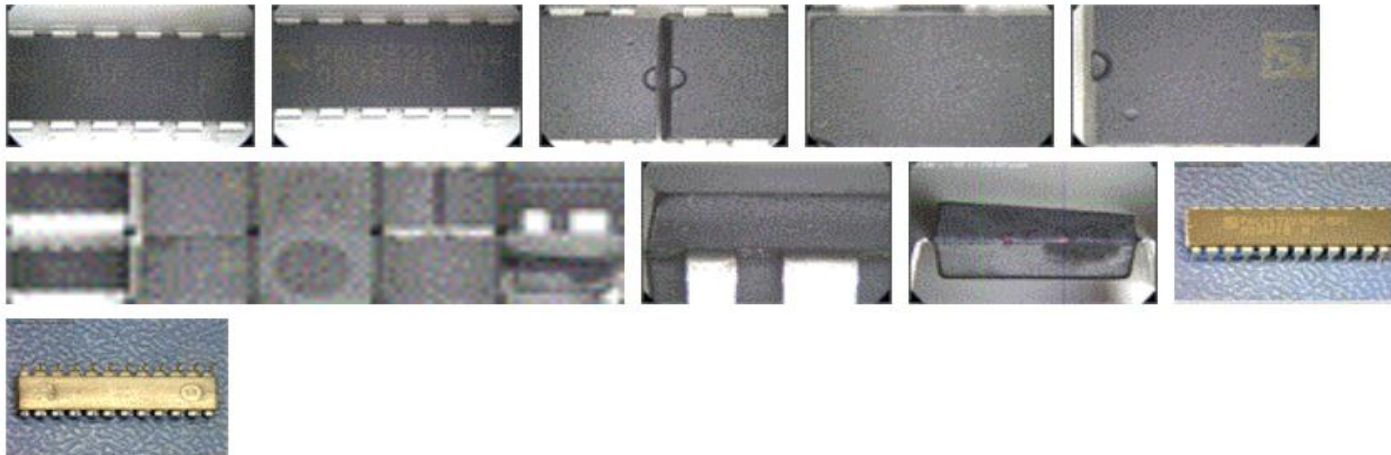
**CAGE Code**

**Date Code** 0036

**Identification** Inspection type reduced sample 4 pcs FAIL. Parts are resurfaced & failed acetone test. Parts also have excess blacktopping on top/side of package, directional sanding marks, diff type package styles & uneven top surface. 31 T's x 16 pcs. 1 T x 4 pcs. P

**Source** Tier 1 Distributor

### Images



### Discussion Forum


There are no discussion notes to display.

 Add a Public Discussion Note

Print

## Import Alerts

Select the file to upload using the browse feature.  
Press the "Upload File" button to start the load and import process.

<b>Component Anomalies</b>	<input type="text" value="Set Alert Type Later"/>  Select an alert type for all alerts, or set an Alert Type later.
<b>Select File to Upload</b>	<input type="button" value="Browse..."/> No file selected. <input type="checkbox"/> Review the column mappings for non standard template files.
<b>Select photos to Upload</b>	<input type="button" value="Browse..."/> No files selected.

- XLS Input Template      Download a blank input file and save to disk.  
Select Save in the next dialog box and save the file to the computer.
- XLSX Input Template      Download a blank input file for Office 2007/2010 and save to disk.  
Select Save in the next dialog box and save the file to the computer.


Print

## Custom Alert Setup

From this page the Administrator can add custom Alert types.

### Current Alert Values

Alert Type	Alert Description	E-Mail All	Created By
COUNTERFEIT PARTS	These parts are suspected/known to be counterfeit based on Company engineering research.		Q-Star™
DIMINISHING MANUFACTURING SOURCES	A notice by the manufacturers that they are discontinuing production of a part, component or material, sold as a single item. The DMSMS Notice is also used to supplement the original notice of potential solutions. These supplemental notices are assigned as amendments to the original notices to maintain continuity. Also include notices of discontinuation for test, measurement, and diagnostic equipment, which are metrology-related data.		Q-Star™
FAILURE ANALYSIS	Contain failure analysis report information and failure analysis summary information as received under contract Data Item Description (DID) items. Also includes reports that identify conditions under which a test instrument cannot perform satisfactorily and reports on calibration mode failure analysis.		Q-Star™
LESSONS LEARNED	A "good work practice" or innovative approach that is captured and shared to promote repeat application. A lesson learned may also be an adverse work practice or experience that is captured and shared to avoid recurrence. (a.) LL's may be submitted by participating government or industry activities. (b.) A general outline of a LL should include: 1) a description of the situation which lead to the lesson learned report, and 2) a suggested local approach to preclude future occurrences of the event which lead to the lesson learned.		Q-Star™
NON-CERTIFIED/NON-CONFORMING PART	A notice that this part might not be conforming to the specification set forth by the original manufacturer.		Q-Star™
Not Specified	User has not specified the alert type		Q-Star™
OTHER	Any other type of problem or issue.		Q-Star™
PROBLEM ADVISORY/ALERT	Report (1) preliminary information on a suspected problem, or (2) a problem with parts, components, materials, manufacturing processes, specification on test equipment that has an unknown or low probability of causing a functional failure. Also report preliminary information on a suspected problem, or a problem with test equipment. All these documents require notification of the manufacturer prior to publication.		Q-Star™
PRODUCT INFORMATION NOTICE	A notice that the manufacturer has released a new product which may be an alternative or upgrade to an existing design, or an entirely new product line.		Q-Star™
TESTED PARTS/CONFORMING /NON-COUNTERFEIT	These parts have been tested by a third party testing facility and have been found to be conforming and non-counterfeit.		Q-Star™

 Add new Custom Alert Type



From:  QStarAdmin <qstar\_admin@qtec.us>  
To:  bcrowley@qtec.us  
Cc:  
Subject: QSPAN Alert Report

Sent: Thu 3/16/17

**Hello Bill Crowley,**

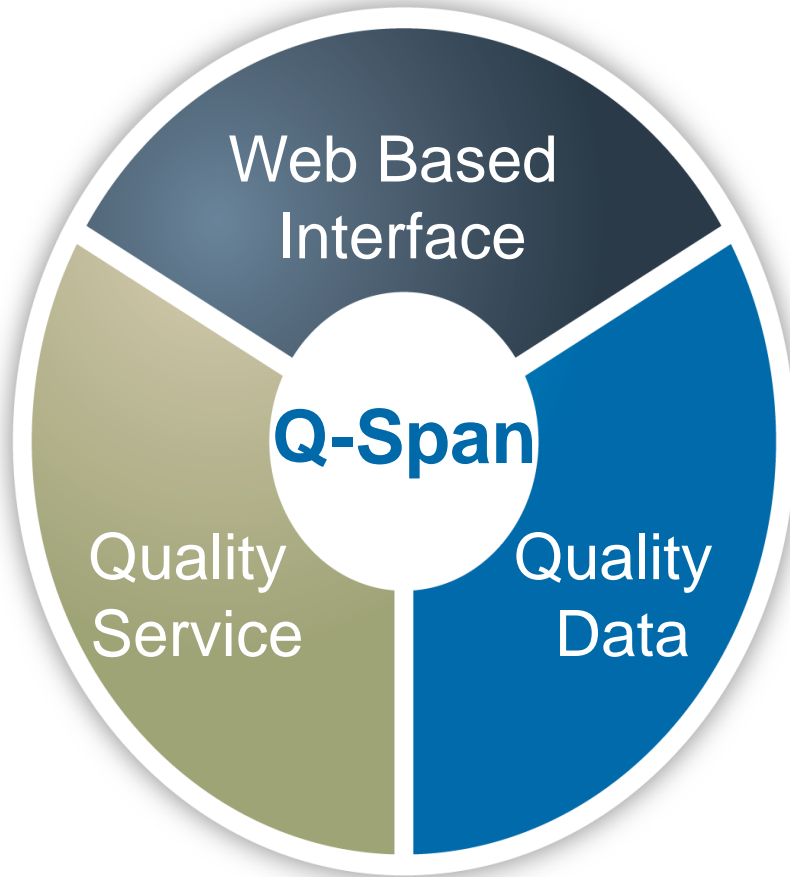
**QSPAN Alert Impact Report for: 3/16/2017**

The following part(s) is/are loaded in one or more of your BOMs in Q-Star™, and have been impacted by a change in availability. You may want to analyze this information to determine if action must be taken. To learn more about any of the parts listed below, click on the "Mfr PN" link to access Part Details within Q-Star™.

Alert Date	Source	Alert Mfr PN	Alert Mfr	Alert CAGE	Lot Code	Date Code	Identification	ALERT Type
2017-03-15	Anonymous	ADXRS300ABG	Analog Devices			1011		EXTERNAL ALERT;SUSPECTED / ALLEGED COUNTERFEIT
2017-03-15	Anonymous	ADXRS300ABG	Analog Devices			1011		EXTERNAL ALERT;SUSPECTED / ALLEGED COUNTERFEIT
2017-03-15	Anonymous	ADXRS300ABG	Analog Devices			1011		EXTERNAL ALERT;SUSPECTED / ALLEGED COUNTERFEIT
2017-03-15	Anonymous	ADXRS300ABG	Analog Devices			1011		EXTERNAL ALERT;SUSPECTED / ALLEGED COUNTERFEIT
2017-03-15	Anonymous	ADXRS300ABG	Analog Devices			1011		EXTERNAL ALERT;SUSPECTED / ALLEGED COUNTERFEIT
2017-03-15	Anonymous	ADXRS300ABG	Analog Devices			1011		EXTERNAL ALERT;SUSPECTED / ALLEGED COUNTERFEIT
2017-03-15	Anonymous	ADXRS300ABG	Analog Devices			1011		EXTERNAL ALERT;SUSPECTED / ALLEGED COUNTERFEIT
2017-03-15	Anonymous	LM125H	National Semiconductor			9630		EXTERNAL ALERT;SUSPECTED / ALLEGED COUNTERFEIT
2017-03-15	Anonymous	LM125H	National Semiconductor			9630		EXTERNAL ALERT;SUSPECTED / ALLEGED COUNTERFEIT
2017-03-15	Anonymous	LM125H	National Semiconductor			9630		EXTERNAL ALERT;SUSPECTED / ALLEGED COUNTERFEIT
2017-03-15	Anonymous	LM125H	National Semiconductor			9630		EXTERNAL ALERT;SUSPECTED / ALLEGED COUNTERFEIT
2017-03-15	Anonymous	LM125H	National Semiconductor			9630		EXTERNAL ALERT;SUSPECTED / ALLEGED COUNTERFEIT
2017-03-15	Anonymous	MC1495BP	ON SEMICONDUCTOR			0035		EXTERNAL ALERT;SUSPECTED / ALLEGED COUNTERFEIT
2017-03-15	Anonymous	MC1495BP	ON SEMICONDUCTOR			0035		EXTERNAL ALERT;SUSPECTED / ALLEGED COUNTERFEIT
2017-03-15	Anonymous	MC1495BP	ON SEMICONDUCTOR			0035		EXTERNAL ALERT;SUSPECTED / ALLEGED COUNTERFEIT
2017-03-15	Anonymous	MC1495BP	ON SEMICONDUCTOR			0035		EXTERNAL ALERT;SUSPECTED / ALLEGED COUNTERFEIT

# Q-SPAN for everyday users...

- **Integrated or separate from Q-Star**
- **Automatic BOM processing and part matching**
- **No need to login**
- **Supporting pictures & documents**
- **Message board**
- **Multiple sources single location**
  - ACF
  - GIDEP
  - Q-Span
  - Others in process
- **Choice of anonymity**
- **Internal system integration**
- **Tool available for local install**



- ✓ Integrated DMSMS & Test Results
- ✓ Multiple Databases/Inputs
- ✓ Easy to use & Auto emails
- ✓ Incentivizes Participation